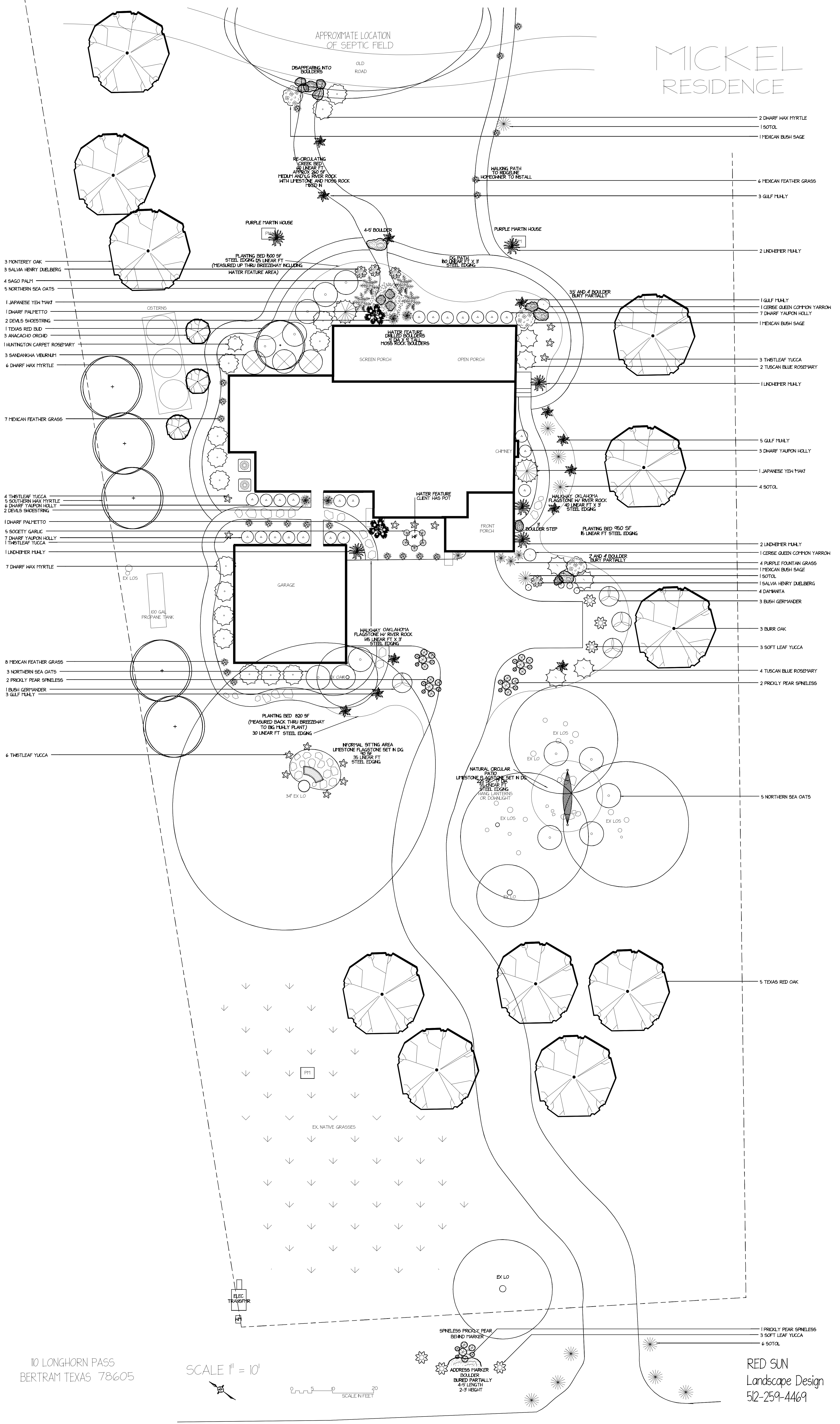


MICKEL RESIDENCE

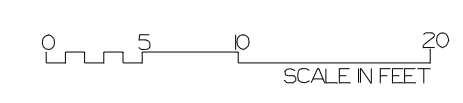


- 3 MONTEREY OAK
- 3 SALVA HENRY DUELBURG
- 4 SAGO PALM
- 5 NORTHERN SEA OATS
- 1 JAPANESE YEM MAKI
- 1 DWARF PALMETTO
- 2 DEVILS SHOESTRING
- 1 TEXAS RED BLD
- 3 ANACACHO ORCHID
- 1 HUNTINGTON CARPET ROSEMARY
- 3 SANDANGWA VEURNUM
- 6 DWARF WAX MYRTLE
- 7 MEXICAN FEATHER GRASS
- 4 THISTLEAF YUCCA
- 5 SOUTHERN WAX MYRTLE
- 6 DWARF YAUFON HOLLY
- 2 DEVILS SHOESTRING
- 1 DWARF PALMETTO
- 5 SOCIETY GARLIC
- 7 DWARF YAUFON HOLLY
- 1 THISTLEAF YUCCA
- 1 LINDBERH MULY
- 7 DWARF WAX MYRTLE
- 8 MEXICAN FEATHER GRASS
- 3 NORTHERN SEA OATS
- 2 PRICKLY PEAR SPINELESS
- 1 BUSH GERMANDER
- 3 GULF MULY
- 6 THISTLEAF YUCCA

- 2 DWARF WAX MYRTLE
- 1 SOTOL
- 1 MEXICAN BUSH SAGE
- 6 MEXICAN FEATHER GRASS
- 3 GULF MULY
- 2 LINDBERH MULY
- 1 GULF MULY
- 1 CERISE QUEEN COMMON YARROW
- 7 DWARF YAUFON HOLLY
- 1 MEXICAN BUSH SAGE
- 3 THISTLEAF YUCCA
- 2 TUSCAN BLUE ROSEMARY
- 1 LINDBERH MULY
- 5 GULF MULY
- 3 DWARF YAUFON HOLLY
- 1 JAPANESE YEM MAKI
- 4 SOTOL
- 2 LINDBERH MULY
- 1 CERISE QUEEN COMMON YARROW
- 4 PURPLE FOUNTAIN GRASS
- 1 MEXICAN BUSH SAGE
- 1 SOTOL
- 1 SALVA HENRY DUELBURG
- 4 D'ANTANTA
- 3 BUSH GERMANDER
- 3 BURR OAK
- 3 SOFT LEAF YUCCA
- 4 TUSCAN BLUE ROSEMARY
- 2 PRICKLY PEAR SPINELESS
- 5 NORTHERN SEA OATS
- 5 TEXAS RED OAK
- 1 PRICKLY PEAR SPINELESS
- 3 SOFT LEAF YUCCA
- 6 SOTOL

10 LONGHORN PASS
BERTRAM TEXAS 78605

SCALE 1" = 10'



RED SUN
Landscape Design
512-259-4469